

# THE TRI-MER FAN / SEPARATOR



**Tri-Mer Corporation**

Factory and Main Offices

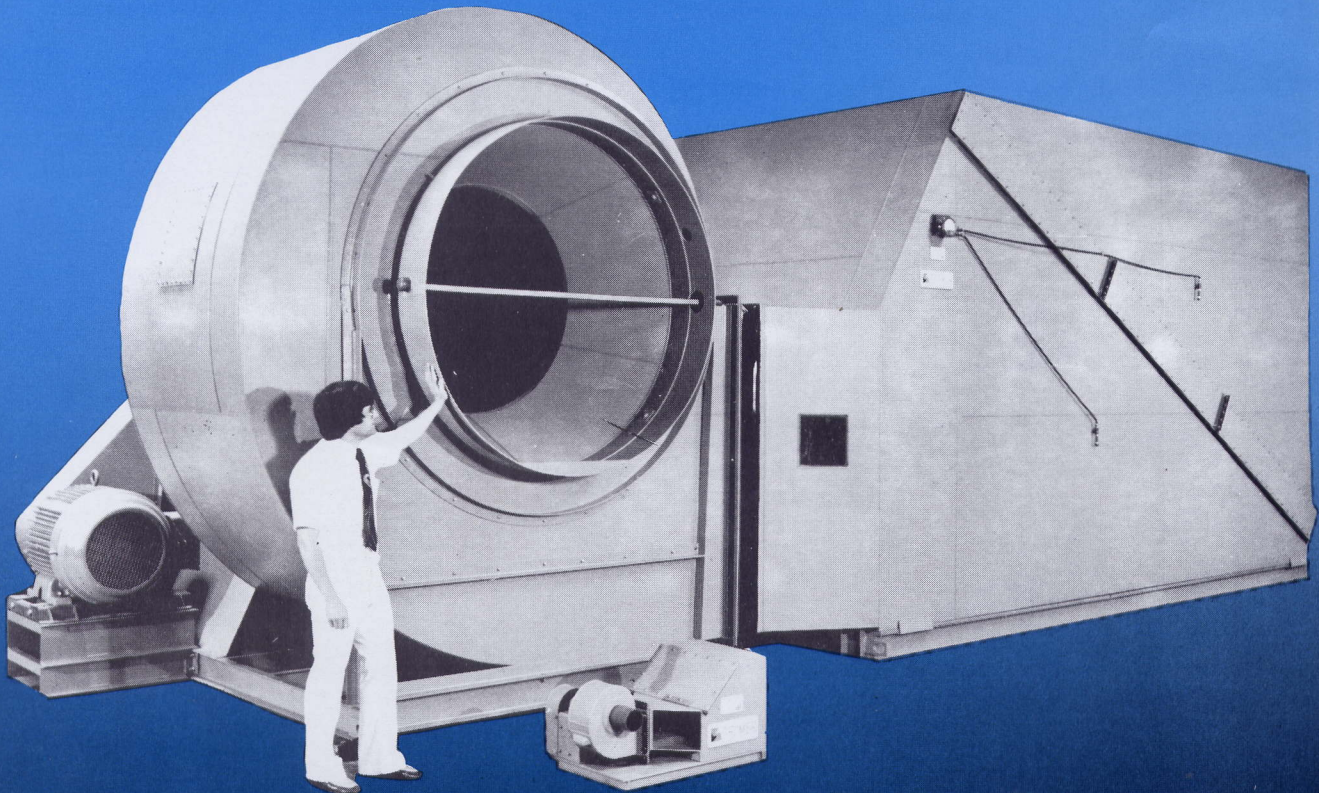
1400 Monroe St. • P.O. Box 730 • Owosso, MI 48867 U.S.A.  
Telephone (989) 723-7838 Fax (989) 723-7844

[www.tri-mer.com](http://www.tri-mer.com)

**DESIGNERS AND MANUFACTURERS OF AIR POLLUTION CONTROL SYSTEMS**



**Tri-Mer Corporation**



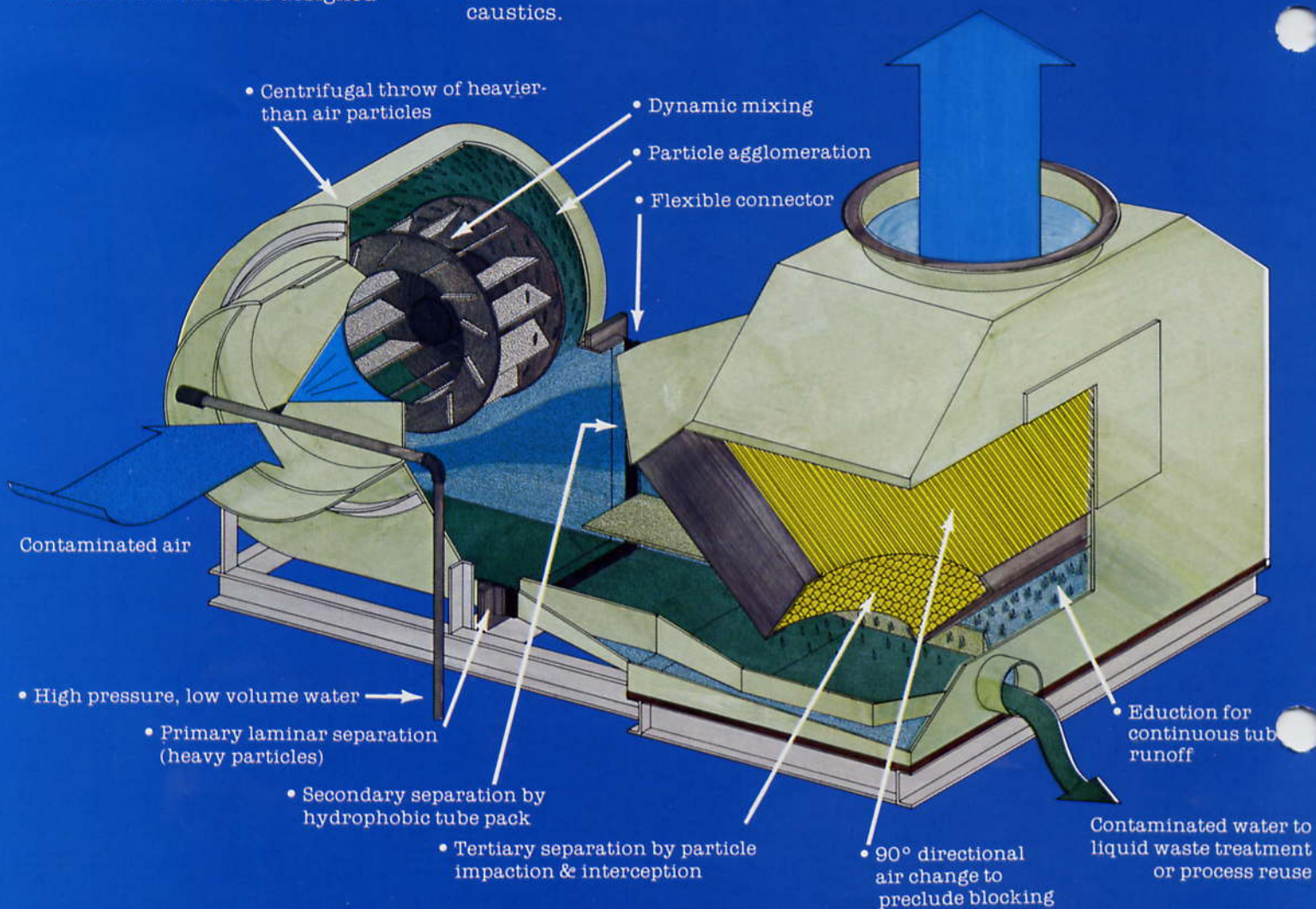
OUR MODEL F-S 1/16 SHOWN WITH MODEL F-S 16

# DESIGN FEATURES OF THE TRI-MER FAN/SEPARATOR

Applications include steel pickling, metal plating, plastic plating, aluminum anodizing, battery forming or charging, as well as dozens of other applications involving the use of corrosive acids. The unique TRI-MER FAN/SEPARATOR is designed

to control dangerous corrosive fumes generated during various metal finishing operations. Hazardous emissions controlled include, sulphuric acid, hydrochloric acid, hydrofluoric acid, nitric acid and hundreds of plating bath solutions and caustics.

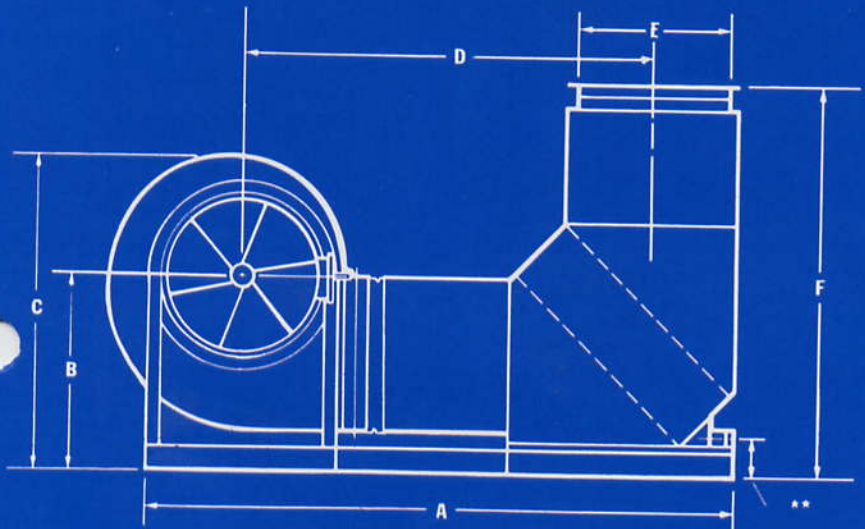
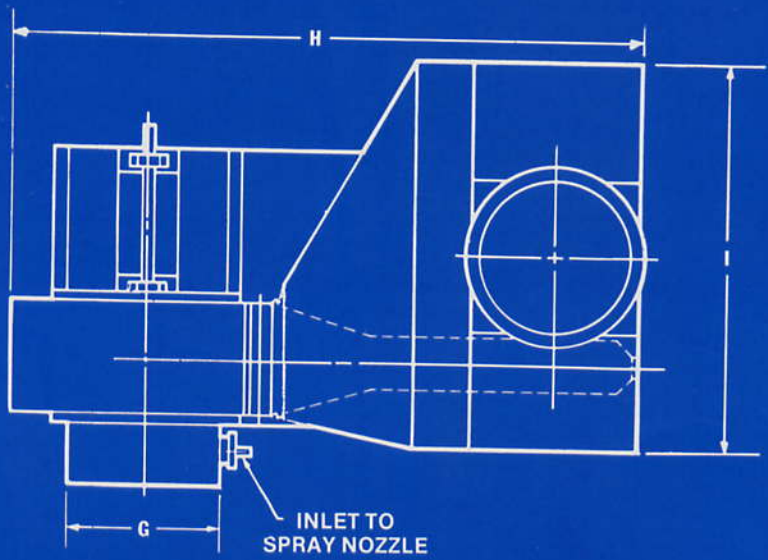
The fan separator cuts operating costs, reduces water usage 90%, and controls corrosive air pollution problems more efficiently than wet scrubbers while using less energy.



Model No.	Capacity C.F.M.	Motor H.P.	A	B	C	D	E	F	G	H	I	Maximum GPM Required	Drain Size	Total Weight
F-S-1/8	50- 250	1/4	2'-8 1/2"	1'	1'-4 3/8"	2'-1"	6"	1'-6 1/2"	6"	2'-10 1/2"	1'-6"	1/4	1/2"	140
F-S-1/4	250- 500	1	3'-1 1/2"	1'-1/2"	1'-6"	2'-3"	8"	2'-1 1/2"	9"	3'-4"	1'-9 1/2"	1/4	2"	180
F-S-1/2	500- 1,000	1 1/2	4'-2"	1'-4 1/2"	2'-1 1/2"	3'-1/2"	11"	2'-9 1/2"	11"	4'-5 1/2"	2'-4 1/2"	1/2	2"	360
F-S-3/4	1,000- 1,700	2	4'-2 1/4"	1'-7 1/2"	2'-5 1/2"	2'-11 1/2"	1'-1"	3'-1"	1'-1"	4'-6"	3'-0"	1/2	2 1/2"	425
F-S-1	1,700- 2,500	3	5'-5"	1'-10 1/2"	2'-10 1/2"	3'-10 1/2"	1'-4"	3'-7 1/2"	1'-4"	5'-8 1/2"	3'-0"	1 1/2	3"	615
F-S-2	2,300- 3,800	5	6'-2"	2'-2"	3'-5"	4'-3"	1'-7"	4'-3"	1'-7"	6'-6 1/2"	3'-9 1/2"	2	4"	770
F-S-3	3,400- 5,700	5	7'-5 1/2"	2'-6 1/2"	4'-1/4"	5'-2"	2'-0"	4'-7 1/2"	2'-0"	7'-11"	4'-0"	3	4"	1,025
F-S-4	5,200- 6,900	7 1/2	8'-7"	2'-8 1/2"	4'-4 1/2"	6'-0"	2'-2"	5'-4"	2'-2"	9'-1 1/2"	5'-5"	4	6"	1,190
F-S-5	6,000- 8,300	7 1/2	8'-10"	2'-10 1/2"	4'-8 1/2"	6'-2 1/2"	2'-4"	4'-11"	2'-4"	9'-6 1/2"	5'-10"	5	6"	1,605
F-S-6	8,000- 10,300	15	9'-7"	3'-2 1/2"	5'-3"	6'-7"	2'-8"	6'-2"	2'-8"	10'-3"	5'-3"	6	6"	1,875
F-S-7	10,000- 12,500	15	10'-2 1/2"	3'-5 1/2"	5'-8 1/2"	6'-10 1/2"	2'-11"	6'-4"	2'-11"	10'-11 1/2"	6'-9"	8	6"	2,088
F-S-8	12,000- 15,300	15	11'-9"	3'-9 1/2"	6'-3 1/2"	8'-0"	3'-3"	7'-0"	3'-3"	12'-6"	6'-9"	9	6"	2,380
F-S-9	15,000- 18,600	20	12'-6"	4'-1 1/2"	6'-10 1/2"	8'-4"	3'-8"	6'-2"	3'-8"	13'-4 1/2"	6'-9"	12	6"	2,930
F-S-10	18,000- 22,700	20	15'-9 1/2"	4'-6"	7'-6 1/2"	10'-3"	4'-0"	6'-11"	4'-0"	16'-9 1/2"	6'-9"	14	6"	3,470
F-S-11	22,000- 27,500	25	16'-11 1/2"	4'-10 1/2"	8'-3 1/2"	11'-2"	4'-5"	8'-0"	4'-5"	17'-10 1/2"	6'-9"	17	6"	4,120
F-S-12	27,500- 37,000	40	20'-4"	5'-6 1/2"	9'-3 1/2"	13'-11"	5'-0"	8'-11"	5'-0"	21'-7 1/2"	8'-0"	20	6"	4,630
F-S-14	37,000- 45,000	50	20'-11"	6'-1 1/2"	10'-1/2"	14'-4"	5'-4"	10'-0"	5'-4"	22'-3"	9'-0"	24	6"	5,100
F-S-15	45,000- 60,000	75	24'-2"	6'-1 1/2"	10'-1"	16'-6 1/2"	5'-4"	11'-2 1/2"	5'-4"	25'-7"	9'	30	6"	6,600
F-S-16	60,000- 80,000	100	31'-8 1/2"	6'-7 1/2"	11'-2 1/2"	20'-5 1/2"	5'-8"	11'-2 1/2"	5'-8"	31'-8 1/2"	9'-4 1/2"	40	6"	8,300
F-S-17	80,000-100,000	125	33'-7"	7'-2 1/4"	11'-11 1/4"	20'-9 1/2"	6'-2"	11'-2 1/2"	6'-2"	33'-6 1/4"	11'-4 1/2"	50	6"	9,000

For double pack models check with manufacturer for dimensional data.

## Dimensions of the TRI-MER FAN / SEPARATOR



The TRI-MER FAN / SEPARATOR offers a compact rectangular shape designed for simple, quick installation.

The fan and separator sections are mated specifically to each other. Undersized fans are NOT found on fan/separators.

Fan outlet velocity is controlled so that air crossing the polypropylene filter pack never exceeds 500 FPM for a given size unit.

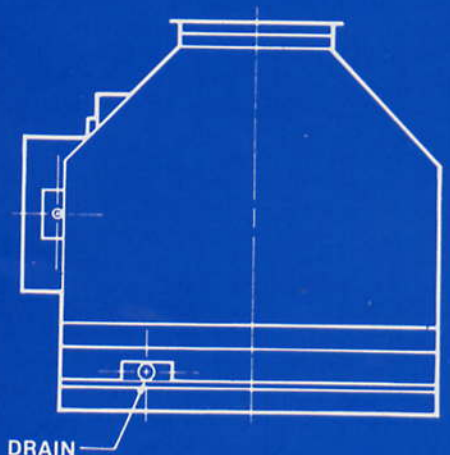
The resulting low humidity factor in the exhaust stack makes return air possible in many applications.

**Standard materials of construction:**

PVC, Polypropylene

**Available optional materials of construction:**

Fiberglass overlaid PVC, 316 stainless steel, 304 stainless steel and mild steel

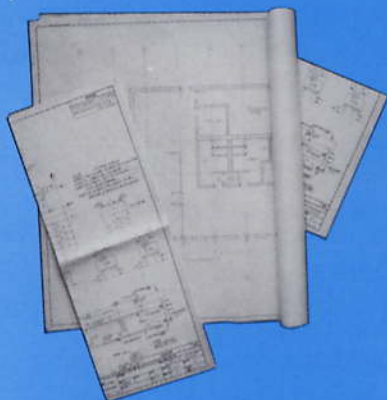


\*\* Dimension varies with size of unit.

# TRI-MER FAN/SEPARATORS ELIMINATE CORROSION PROBLEMS

## ELIMINATE CORROSION PROBLEMS.

Tri-Mer can help. We offer complete engineering and consultant services from blueprints through permit stages to fabrication and installation.



Because proper planning at print stage is always less expensive than alterations near completion.

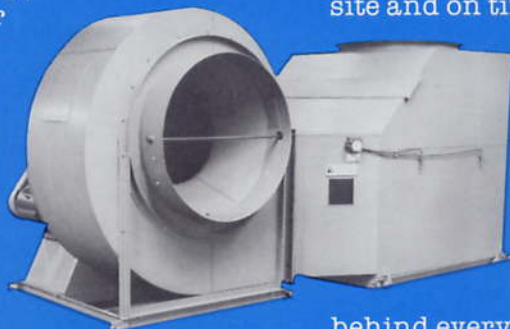
## WHY TRI-MER SEPARATORS?

Because Tri-Mer separators are constructed of corrosion-proof PVC with self-cleaning polypropylene filters for long life and minimal maintenance.

They use about one tenth the amount of water required by conventional

wet scrubbers or towers.

Low static pressure and minimal horsepower requirements mean lower energy usage.



Its compactness and light weight mean low cost, easy installation.

## TRI-MER HAS ANOTHER IMPORTANT ENERGY SAVING FEATURE.

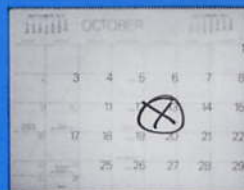
Because the moisture eliminator is on the downstream side of the fan, in many instances scrubbed air can actually be returned into the plant.

## TRI-MER MANUFACTURES FOR A WIDE RANGE OF CAPACITY REQUIREMENTS.

From 50 cfm to 100,000 cfm in single or multiple units, depending on your specific application. We can even help you plan for economical future expansion.

## FAST DELIVERY AND RELIABILITY.

Tri-Mer delivers. On site and on time. Most systems are completed within a 6 to 8 week period. And Tri-Mer stands behind every system we build.



## FAN SEPARATORS. SOMETIMES YOU DON'T NEED THEM.

Tri-Mer offers the same print-to-installation service for cross flow and tower scrubbers as well as PVC exhaust systems.

 **TRI-MER**  
Tri-Mer Corporation  
Air Pollution Control Systems

1400 Monroe St. • P.O. Box 730 • Owosso, MI 48867 U.S.A.  
Telephone (989) 723-7838 Fax (989) 723-7844  
[www.tri-mer.com](http://www.tri-mer.com)